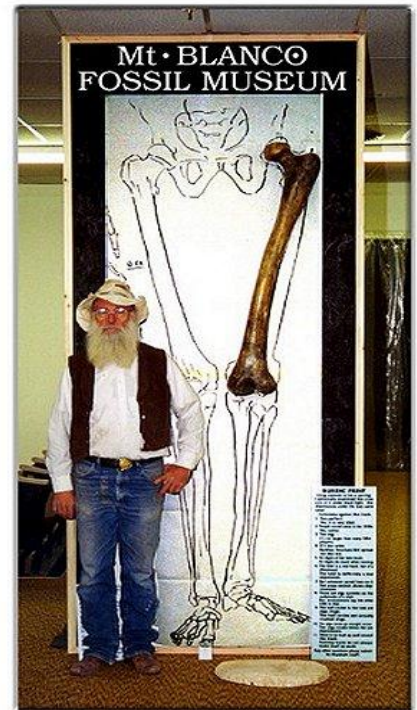


DADS & LADS BREAKFAST - MAY 30 AT 7:00 AM



Surprising Evidence for Biblical Creation

[Dr. Ed Neeland](#) is speaking at the
Dads & Lads Breakfast Meeting at
[First Baptist Church of Arlington](#)
426 N. French Ave., Arlington
Saturday, May 30th at 7:00 AM



There are two competing explanations for how we got here – Evolution or God. Both explanations are diametrically opposed to each other so trying to combine the two theories is fruitless. This talk investigates evidence which clearly contradicts the evolutionary scenario and is consistent with biblical creation. Evidence includes fossils, carvings, simple statistics and rethinking geologic time in light of recent evidence.

The world sees science and Christianity as fact and faith, respectively. But there are many facts showing that God's words in Genesis make sense. Join [Dr. Ed Neeland](#) as he shows how the scientific evidence supports the Genesis account again and again. This talk will deepen your understanding and you will see the book of Genesis in a new way. It is Ed's hope that this talk will strengthen your faith and see Evolution for what it is - a philosophy, not science.

Ed became a PhD scientist because the beauty of nature captured him early and he wanted answers to his questions. Ed became a follower of Jesus Christ at the age of 18 and soon learned that his biology professors and the Bible were at odds. This started an eye-opening period of comparing the evidence against both origin accounts. It became very apparent that the Biblical story of creation was far more consistent with the evidence than evolution. Today, Ed is a university chemistry professor teaching students and specializing in the synthesis of new antibiotic/anti-inflammatory medicines. Ed continues to educate people in [creation-evolution talks](#) as well as being an archer, gold prospector and motorcyclist.

APOLOGETICS  **FORUM** snohomish county
Helping Equip Believers in The Defense of The Faith

[AFSC](#) was founded to help equip Christians in the defense of The Faith in the postmodern world in three related areas: 1) [Creation vs. Evolution](#), 2) [Christian Apologetics](#) and 3) [Biblical Worldview](#). [AFSC](#) provides a local Forum in the North Snohomish County area for lectures and DVD programs by knowledgeable presenters on these topics. All presentations are given with the presupposition that the Bible is God's inspired Word and is accurate and inerrant in its original autographs. The Bible is a total worldview that speaks to all disciplines and areas of our life. More on [AFSC](#) can be found at <http://ApologeticsForum.org>.